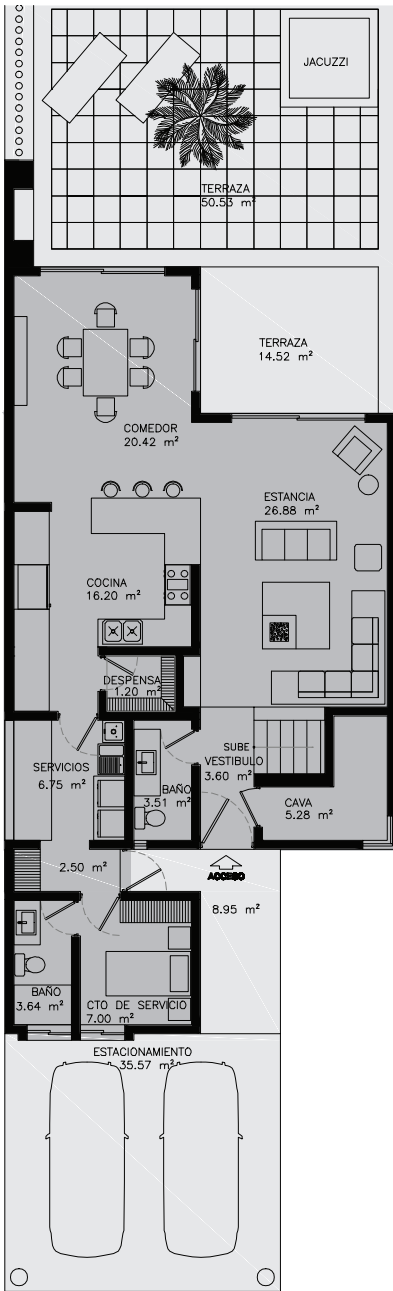
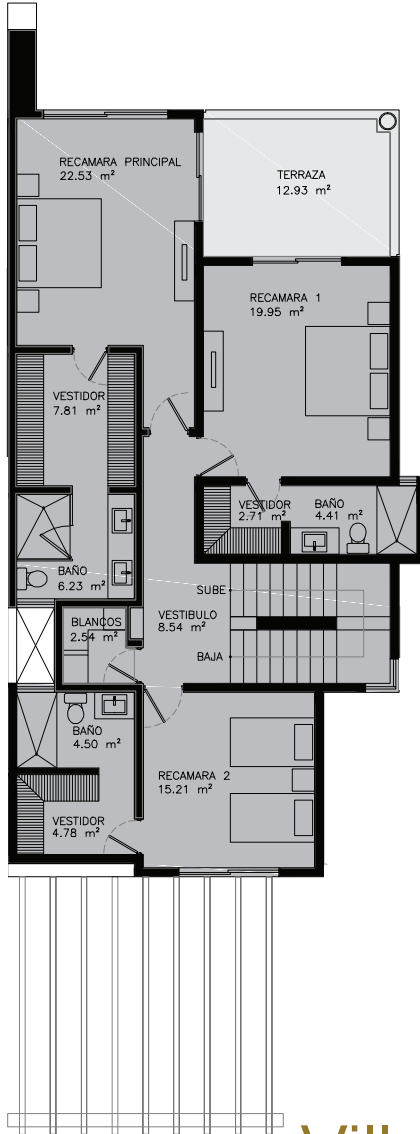


# Isla Victoria

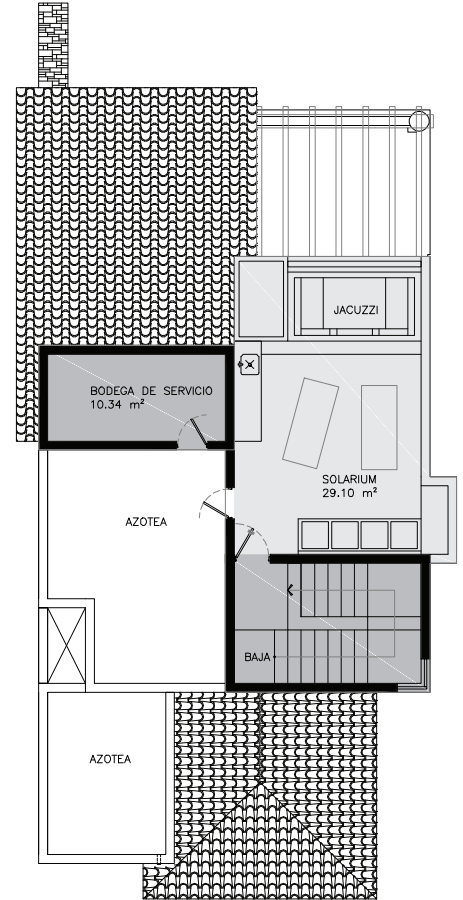
MARINA VILLAS & TOWNHOUSES



GROUND FLOOR



LEVEL 1



LEVEL 2 Solarium

TOTAL AREA 4,650 sq ft<sup>2</sup>

## Villa

- Two pergola covered parking spaces
- Spacious terrace with jacuzzi
- Foyer
- Living and Dining room
- Italian kitchen
- Guest bathroom
- 3 Bedrooms with bathroom and walk-in closet
- Cava
- Solarium with jacuzzi
- Pantry
- Laundry room
- Maid's room with bathroom
- Storage

For more information please visit  
[www.isla-victoria.com.mx](http://www.isla-victoria.com.mx)

The images and texts are solely for illustration purposes.  
 The content will have not validity before any legal authority.  
 The developer reserves the right to make changes to the  
 project without notice.